



# WKit V3

**User Manual**

**English**



# WKit V3

This handy little tool was born out of our own frustration. If you've ever had to cut pipe bends, you know how frustrating it can be to mark the desired angle neatly. Whether you're working on exhaust systems, intercooler piping, or other projects, you need a reliable way to determine and scribe the angle precisely.

With the WKit V3, we've reached the next level!

The new model offers a mechanical detent every 5°, allowing you to set the desired angle even more precisely and securely. The improved angle scale is also easier to read, ensuring you always have a perfect overview in any situation.

- The adjustment range extends from 15° to 180°.

Thanks to its more robust construction, the WKit V3 is more durable than ever and perfectly suited for use under demanding conditions.

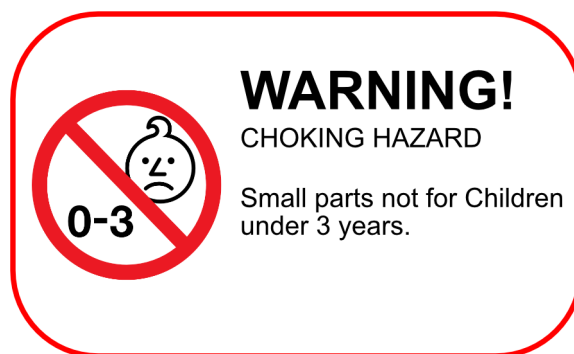
The tool still features a convenient M6 hole, allowing you to easily clamp it in a vise or secure it wherever you need it.

Our marking guides are robust and made from PETG material. We use advanced 3D printing technology to ensure a perfect fit and the highest quality.

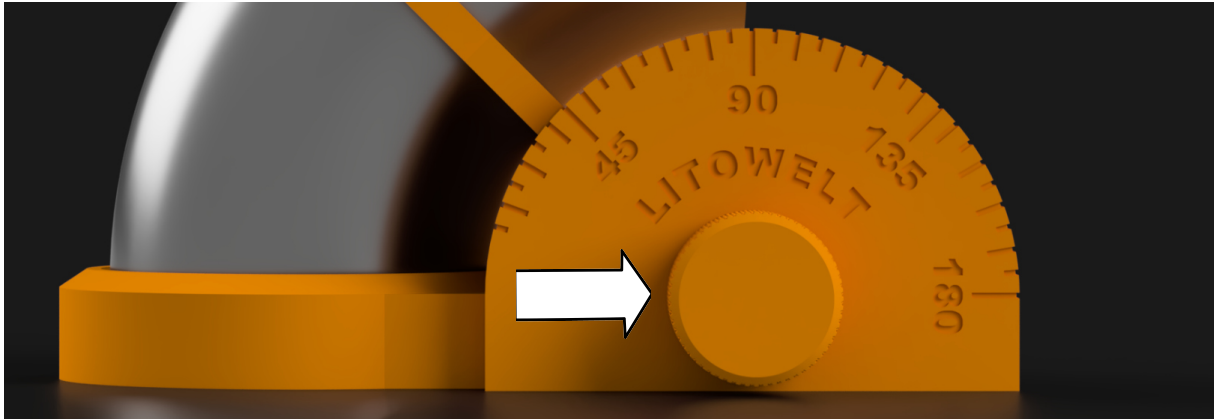
Need a different size? No problem!

Just contact us, and we'll surely find a solution that meets your requirements.

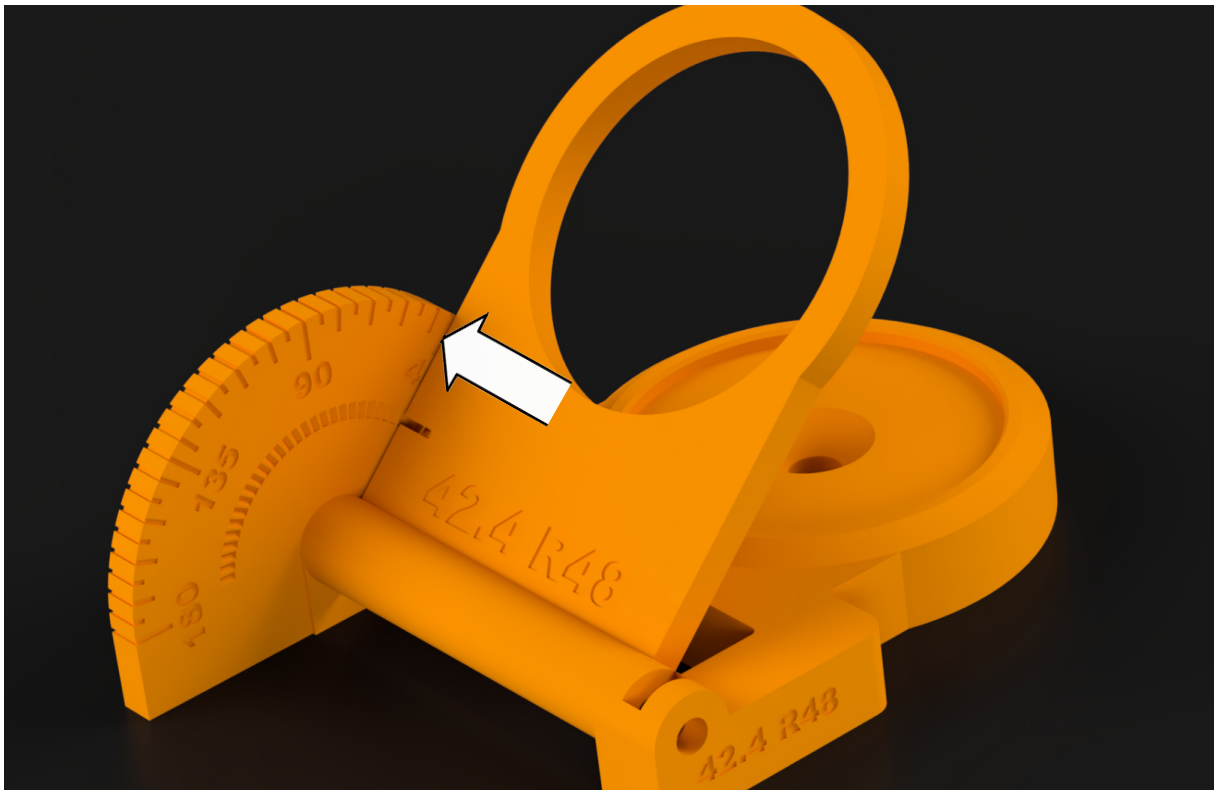
By the way, the images you see here are renderings from our CAD software. The actual product may have slight variations, but trust us – it's just as fantastic! :)



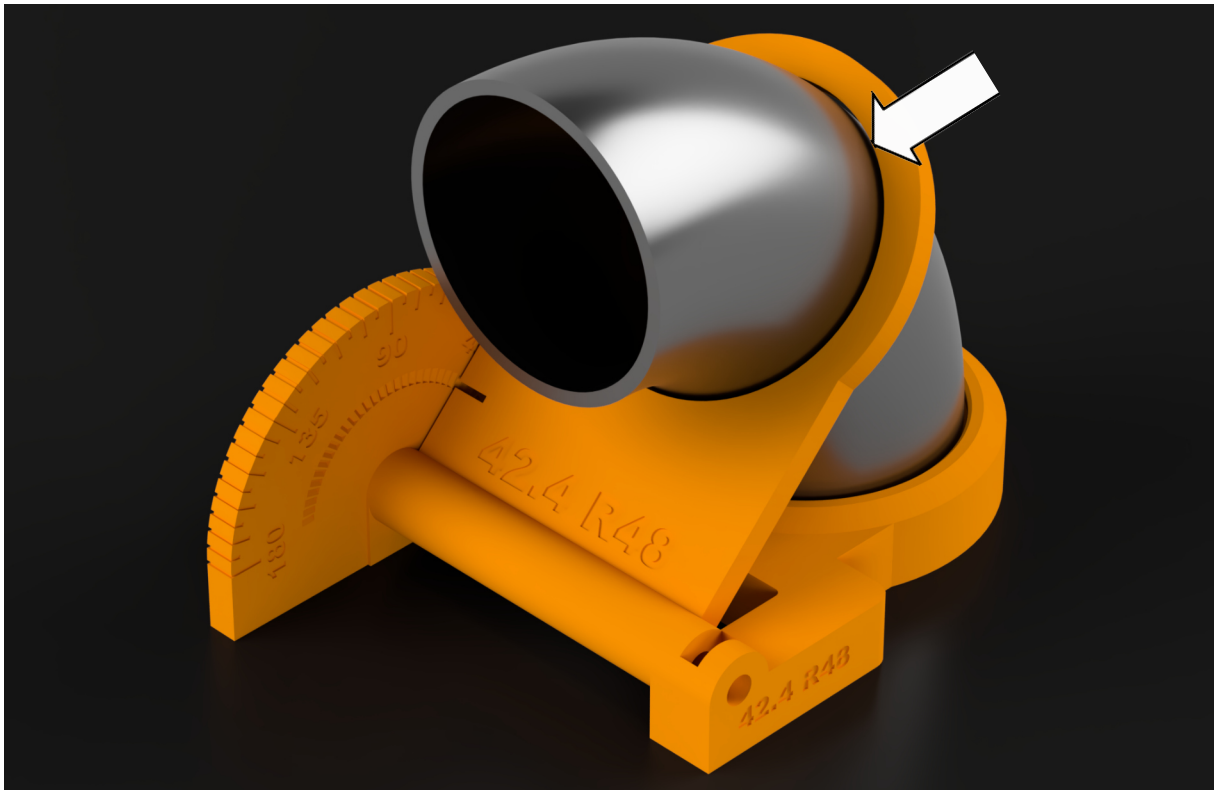
# Anwendung



**1. Loosen the screw.**



**2. Set the marker to the desired angle using the visible edge (assisted by the integrated 5° detents).**



**3. Insert the pipe bend and mark along the line.  
Done!**

# Manufacturer

Sascha Werblow

Linnufer 20

58093 Hagen

Germany

[www.litowelt.com](http://www.litowelt.com)

[info@litowelt.com](mailto:info@litowelt.com)